

1

# Network Landcare Europe

- advancing the movement -



[www.goeppe.de](http://www.goeppe.de)

19th October 2010, Nagoya

[www.lpv.de](http://www.lpv.de)

DVL  Deutscher Verband für Landschaftspflege

2

## What is Landcare?

Landcare is the practice and ethic of caring for the land. It is locally-led, community based **land stewardship** including sustainable farming, forestry, landscaping and related activities that improve economic, social, and environmental conditions.

(source: US Landcare, Landcare notes, July 2008)



[www.goeppe.de](http://www.goeppe.de)

19th October 2010, Nagoya

[www.lpv.de](http://www.lpv.de)

DVL  Deutscher Verband für Landschaftspflege

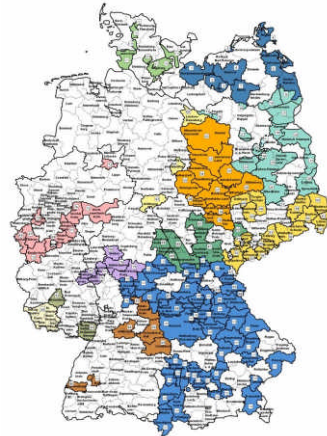
3

## German Association for Landcare

**The German Association for Landcare (DVL)** founded in 1993 is the umbrella organisation for all regional Landcare Associations (LCAs) or similar organisations in Germany.

➔ 150 LCAs at the moment – at least one in every federal state!

- we provide support and policy guidance to the network of LCAs
- we regularly inform and influence decision-makers at all levels



[www.goepfel.de](http://www.goepfel.de)

19th October 2010, Nagoya

[www.lpv.de](http://www.lpv.de)

DVL  Deutscher Verband für Landschaftspflege

4

## What are Landcare Associations?

- Societies, founded by **farmers, environmentalists** and **local politicians**; usually not-for-profit organisations serving the public interest; independent units
- **first characteristic: parity**  
Boards: equal numbers of environmentalists, farmers and local politicians
- **second characteristic : voluntary participation**  
➔ on request, they offer advice to municipal administrations, to farmers and other private landowners

[www.goepfel.de](http://www.goepfel.de)

19th October 2010, Nagoya

[www.lpv.de](http://www.lpv.de)

DVL  Deutscher Verband für Landschaftspflege

5

## Goals of Landcare Associations

### Three main goals:

- to create an overall **network of natural habitats** (network of biotopes)
- to encourage **landscape management in conjunction with farmers** and offer them a reliable **second income from agri-environment schemes**
- to support **rural development** and **regional products**



[www.goeppel.de](http://www.goeppel.de)

19th October 2010, Nagoya

[www.lpv.de](http://www.lpv.de)

DVL  Deutscher Verband für Landschaftspflege

6

## How are these goals achieved?

- LCAs act as **advisers and mediators** on agri-environment schemes on private - whole farm conservation advice - and community land.
- LCAs **plan and co-ordinate** measures to improve the ecological value of man-made landscapes
  - ➔ planting hedges and preserving orchards
  - ➔ mowing wetlands
  - ➔ cutting scrub on ecologically valuable grazing grounds
- The work is mainly done by local farmers.
- LCAs work in **close cooperation** with regional authorities and support the realization of nature conservation directives.



[www.goeppel.de](http://www.goeppel.de)

19th October 2010, Nagoya

[www.lpv.de](http://www.lpv.de)

DVL  Deutscher Verband für Landschaftspflege

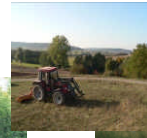
7

## Future challenges



■ During the **Health-Check-process** of the European common agricultural policy, **new challenges** became core elements in the discussion.

- ➔ retaining our biodiversity
- ➔ caring for our water resources
- ➔ conserving our soils
- ➔ coping with climate change



■ The European institutions are aware that they have to **change core elements of their policies** to cope with these challenges.

■ Therefore **public money for public goods** will be the slogan for the future European common agricultural policy.

A slogan which the European Landcare movement wholeheartedly supports.

[www.goeppe.de](http://www.goeppe.de)

19th October 2010, Nagoya

[www.lpv.de](http://www.lpv.de)

DVL Deutscher Verband für Landschaftspflege

8

## Landcare – to achieve European targets

■ various directives form the **framework for nature conservation and landcare at a European level**.

- ➔ European birds directive
- ➔ Habitats directive
- ➔ Water framework directive



■ **LCAs put** these directives **into action**. Close cooperation between land-users, conservationists and politicians at a local level is one of the core elements for success;

- functional **financial tools** are another core element
  - financial incentives for farmers (agri-environment schemes),
  - Landcare-investment schemes that help to conserve habitats (i.e. shelter sheds and other grazing infrastructure)
  - financial support for the management tasks of LCAs.

[www.goeppe.de](http://www.goeppe.de)

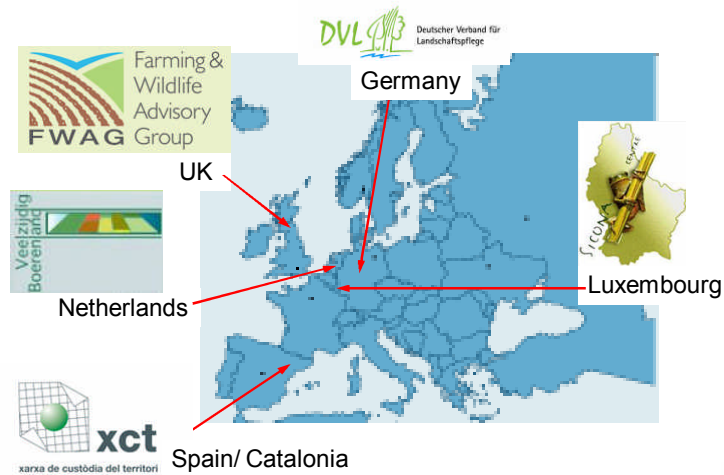
19th October 2010, Nagoya

[www.lpv.de](http://www.lpv.de)

DVL Deutscher Verband für Landschaftspflege

9

## Network Landcare Europe


[www.goeppel.de](http://www.goeppel.de)

19th October 2010, Nagoya

[www.lpv.de](http://www.lpv.de)


10

## Landcare Netherlands



### Veelzijdig Boerenland

Fonteinlaan 5  
 NL - 2012 JG Haarlem  
 Netherlands  
 Mr. Hans Hoek  
 Director  
 Phone: 0031-6- 411 32 582  
 Mail: [hoek@veelzijdigboerenland.nl](mailto:hoek@veelzijdigboerenland.nl)  
[www.veelzijdigboerenland.nl](http://www.veelzijdigboerenland.nl)

The main focus lies in the area of agriculture, nature conservation and landscape protection.

[www.goeppel.de](http://www.goeppel.de)

19th October 2010, Nagoya

[www.lpv.de](http://www.lpv.de)


11

## Landcare Luxembourg



**SICONA / Biological Station  
Luxembourg**  
Rue de Nospelt 2  
L - 8394 Olm  
Luxembourg  
Mrs. Claudine Junck  
Member of the Managing Board  
Phone: 00352 263036-24  
Mail: [claudine.junck@sicona.lu](mailto:claudine.junck@sicona.lu)  
[www.sicona.lu](http://www.sicona.lu)

Strong commitment in advising farmers on conservation topics.

[www.goeppe.de](http://www.goeppe.de)

19th October 2010, Nagoya

[www.lpv.de](http://www.lpv.de)



12

## Landcare UK



**Farming and Wildlife Advisory  
Group FWAG**  
Stoneleigh Park, Kenilworth,  
Warwickshire, CV8 2RX  
United Kingdom  
Mr. Andy Ormiston  
Managing Director  
Phone: 0044 771 3333178  
Mail: [andy.ormiston@fwag.org.uk](mailto:andy.ormiston@fwag.org.uk)  
[www.fwag.org.uk](http://www.fwag.org.uk)

Providers of environmental and conservation advice to farmers in the UK

[www.goeppe.de](http://www.goeppe.de)

19th October 2010, Nagoya

[www.lpv.de](http://www.lpv.de)



13

## Landcare Spain/ Catalonia



**Xarxa de Custòdia del Territori xct**  
 c. Sagrada Família, 7  
 Universitat de Vic  
 E - 08500 Vic  
 Spain  
 Mr. Jordi Pietx  
 Executive Director  
 Phone: 0034 938 866 135  
 Mail: [jpietx@custodiaterritori.org](mailto:jpietx@custodiaterritori.org)  
[www.custodiaterritori.org](http://www.custodiaterritori.org)

Catalonian landstewardship umbrella organization for 150 associations

[www.goeppe.de](http://www.goeppe.de)

19th October 2010, Nagoya

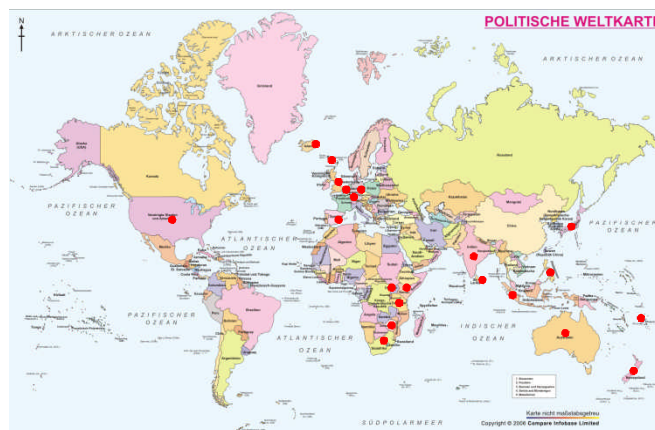
[www.lpv.de](http://www.lpv.de)



14

## Landcare and Satoyama – A growing movement

→ Protection of man-made landscapes in partnership with land users.



[www.goeppe.de](http://www.goeppe.de)

19th October 2010, Nagoya

[www.lpv.de](http://www.lpv.de)



15

## Common characteristics of Satoyama and Landcare

### Our Vision: Realizing societies in harmony with nature

- Advancing socio-ecological production landscapes for the benefit of biodiversity and human well-being
- Building positive human-nature relationship by maintaining and developing socio-economic activities in alignment with natural processes
- Ensuring that biological resources are managed and utilized in sustainable manner
- Formulating a vision of a society that is based on the sustainability of the following three aspects: energy, resource and ecosystems

### Conclusion:

**Satoyama and Landcare are united by common interests**

[www.goeppe.de](http://www.goeppe.de)

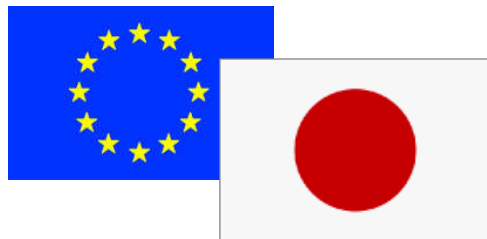
19th October 2010, Nagoya

[www.lpv.de](http://www.lpv.de)



16

## The Satoyama – Initiative and Landcare



Many thanks to Japan for the Satoyama initiative!

Thank you for the opportunity to exchange experiences and to act together on a global scale!

[www.goeppe.de](http://www.goeppe.de)

19th October 2010, Nagoya

[www.lpv.de](http://www.lpv.de)





## Network Landcare Europe

- advancing the movement -



**Josef Göppel, Member of the German Parliament**

Head of German Association for Landcare

Deutscher Verband für Landschaftspflege (DVL)

Feuchtwangerstr. 38, D-91522 Ansbach, Germany

Phone 0049 981 4653-3544

Email: [info@goeppel.de](mailto:info@goeppel.de)

[www.goeppel.de](http://www.goeppel.de) ; [www.lpv.de](http://www.lpv.de)

[www.goeppel.de](http://www.goeppel.de)

19th October 2010, Nagoya

[www.lpv.de](http://www.lpv.de)

